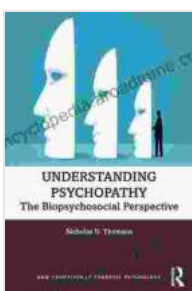


The Biopsychosocial Perspective: Unraveling the Complexities of Forensic Psychology

Forensic psychology, a captivating field where law and psychology intertwine, ventures into the intricate minds of individuals involved in legal proceedings. The Biopsychosocial Perspective (BPS) emerges as a comprehensive approach, illuminating the multifaceted interplay between biological, psychological, and social factors that shape human behavior. This article delves into the depths of BPS, showcasing its groundbreaking insights and transformative impact on the landscape of forensic psychology.

Biological Foundations: Unlocking the Neurological Underpinnings

The BPS model places significant emphasis on the biological underpinnings of behavior. Neuroanatomy, neurochemistry, and genetics play pivotal roles in shaping an individual's psychological makeup and behavioral tendencies. Advanced neuroimaging techniques, such as functional magnetic resonance imaging (fMRI) and electroencephalography (EEG), offer valuable insights into the neural mechanisms underlying criminal behavior.



Understanding Psychopathy: The Biopsychosocial Perspective (New Frontiers in Forensic Psychology)

by Bathroom Readers' Institute

★★★★☆ 4.6 out of 5

Language : English

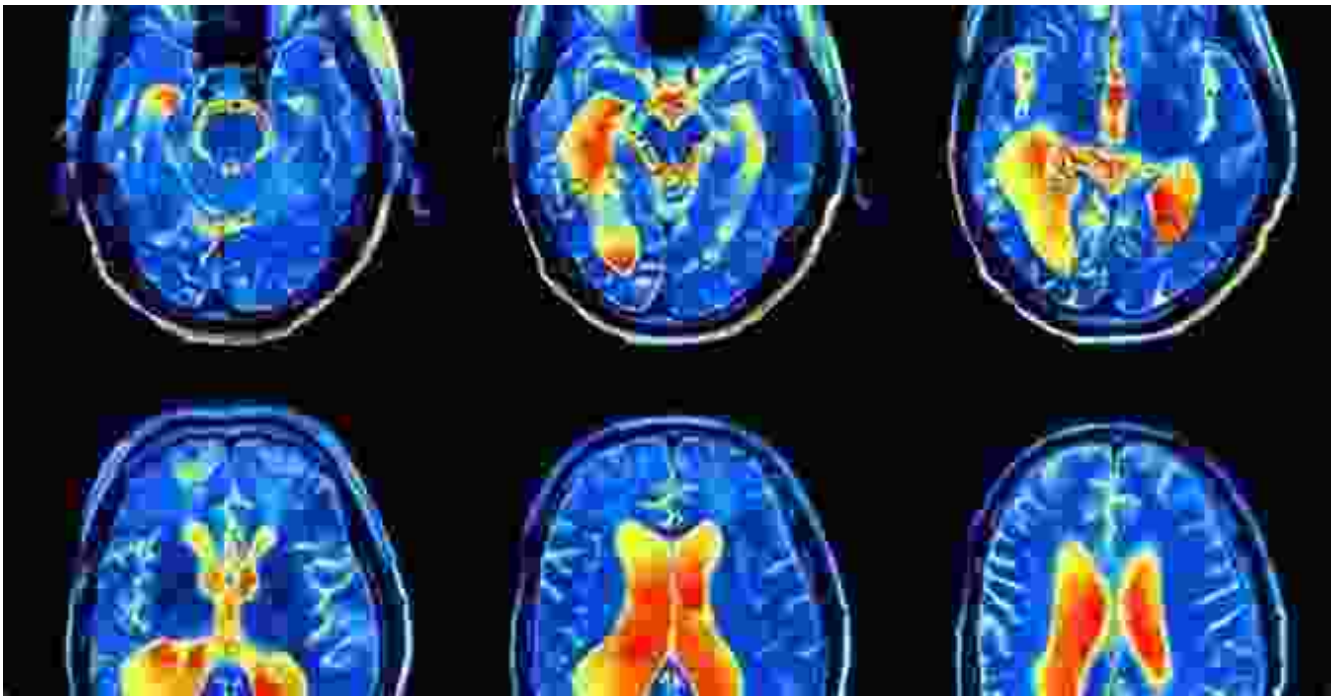
File size : 2876 KB

Screen Reader : Supported

Print length : 172 pages

FREE

DOWNLOAD E-BOOK



Psychological Processes: Exploring Cognitive and Emotional Dynamics

Cognitive and emotional processes lie at the core of human behavior. The BPS model delves into these intricate mechanisms, examining how they influence decision-making, risk-taking, and emotional regulation. Cognitive distortions, biases, and deficits can contribute to criminal behavior, while emotional dysregulation and trauma can further complicate matters. Understanding these psychological processes provides crucial insights into the motivations and actions of individuals involved in legal proceedings.

Social Influences: Unraveling Environmental Impact

Social factors exert a profound influence on human development and behavior. The BPS model acknowledges the impact of family dynamics,

peer relationships, socioeconomic status, and cultural norms on the formation of an individual's social identity and propensity for criminal behavior. Environmental stressors, such as poverty, discrimination, and abuse, can create vulnerabilities that increase the likelihood of engaging in antisocial acts.



Assessment and Intervention: Applying BPS Insights

The BPS perspective guides forensic psychologists in their assessment and intervention practices. By considering the biological, psychological, and social factors that contribute to an individual's behavior, forensic psychologists can develop comprehensive evaluations that accurately assess risk, determine competency, and inform treatment plans.

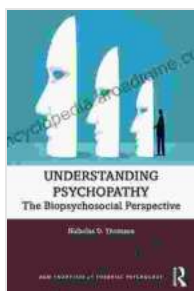
Intervention strategies informed by the BPS model aim to address the

underlying factors that contribute to criminal behavior, fostering rehabilitation and reducing recidivism rates.

Emerging Frontiers: Pushing the Boundaries of BPS

The BPS model continues to evolve, with ongoing research expanding its reach and depth. Neurocriminology, a burgeoning subfield, examines the neurological correlates of criminal behavior, while social neuroscience investigates the neural mechanisms underlying social cognition and group dynamics. Epigenetics, the study of how environmental factors influence gene expression, offers promising insights into the transgenerational transmission of vulnerability to criminal behavior.

The Biopsychosocial Perspective has revolutionized the field of forensic psychology, providing a holistic and evidence-based approach to understanding the complexities of human behavior in legal contexts. By integrating biological, psychological, and social factors, the BPS model illuminates the multifaceted nature of crime causation and guides forensic psychologists in their assessment, intervention, and research practices. As the field continues to advance, the BPS model will undoubtedly remain a cornerstone of forensic psychology, contributing to a more just and equitable society.



Understanding Psychopathy: The Biopsychosocial Perspective (New Frontiers in Forensic Psychology)

by Bathroom Readers' Institute

★★★★☆ 4.6 out of 5

Language : English

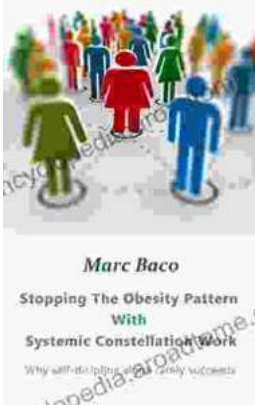
File size : 2876 KB

Screen Reader : Supported

Print length : 172 pages

FREE

DOWNLOAD E-BOOK



Break Free from the Obesity Pattern: A Revolutionary Approach with Systemic Constellation Work

Obesity is a global pandemic affecting millions worldwide. While traditional approaches focus on dieting and exercise, these often fall short in addressing the underlying...



Robot World Cup XXIII: The Ultimate Guide to Advanced Robotics Research and Innovation

The Robot World Cup XXIII: Lecture Notes in Computer Science 11531 is a comprehensive guide to the latest advancements in robotics research and innovation. This prestigious...